

U.S. ARMY JAPAN

在日米陸軍



www.usarj.army.mil
www.facebook.com/USARJ
[@USARJ_PA0](https://twitter.com/USARJ_PA0)
[@usarmyjapan](https://www.instagram.com/usarmyjapan)
www.linkedin.com/company/usarj

U.S. ARMY JAPAN'S STRATEGIC AIM

U.S. Army Forces in Japan are operationally capable and integrated with the JGSDF, providing a strong deterrent against aggression, and enabling U.S. strategic advantage. This readiness is built upon forward-stationed U.S. Army capabilities, host-nation expertise, and Joint Reception, Staging, Onward Movement, and Integration proficiency. Regional partners and allies recognize the U.S. Army-JGSDF partnership as a model of effective deterrence.

ORGANIZE FORCES

Structuring the U.S. Army in Japan with multi-domain capabilities supports joint operational missions

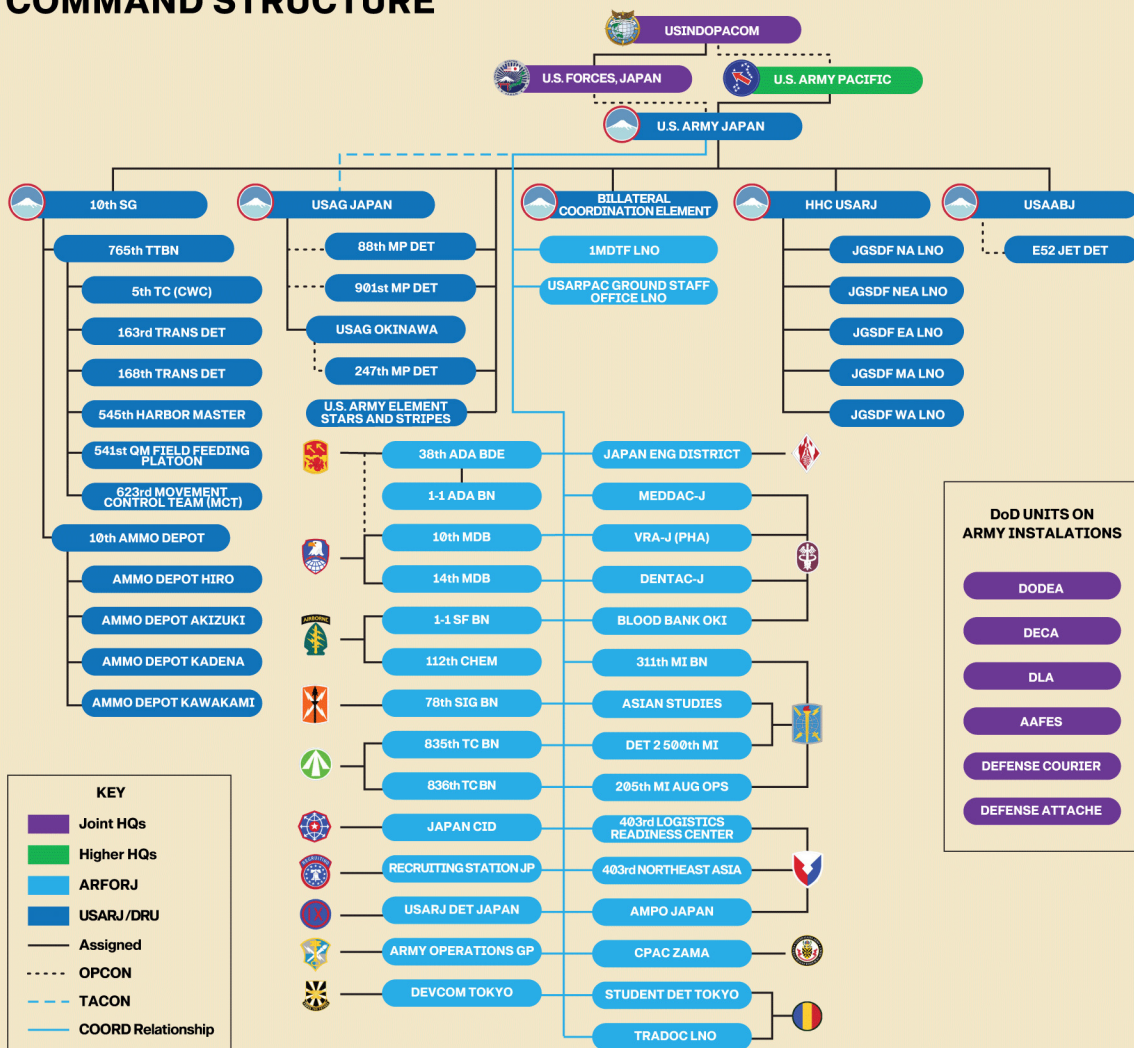
GENERATE READINESS

Rehearsing wartime missions matures emerging capabilities, refines interoperability with our Japanese and joint partners, and promotes multilateral integration with Australia, the Republic of Korea, and the Philippines

APPLY DECISIVE LANDPOWER

Emplacing multi-domain capabilities in key terrain for positional advantage, combined with strengthening sustainment, protection, and digital transport infrastructure in Japan to enhance rapid combat power projection, ensures the U.S. Army can effectively support the Joint Force in crises and conflict.

COMMAND STRUCTURE



PARTNERSHIPS

