

# Questions regarding shipping pets back to Japan from authorized voluntary departure:

- Pet return 'hotline', manned from 0800-1630 every day (Japan Standard Time) by veterinary staff:

Commercial from the States:

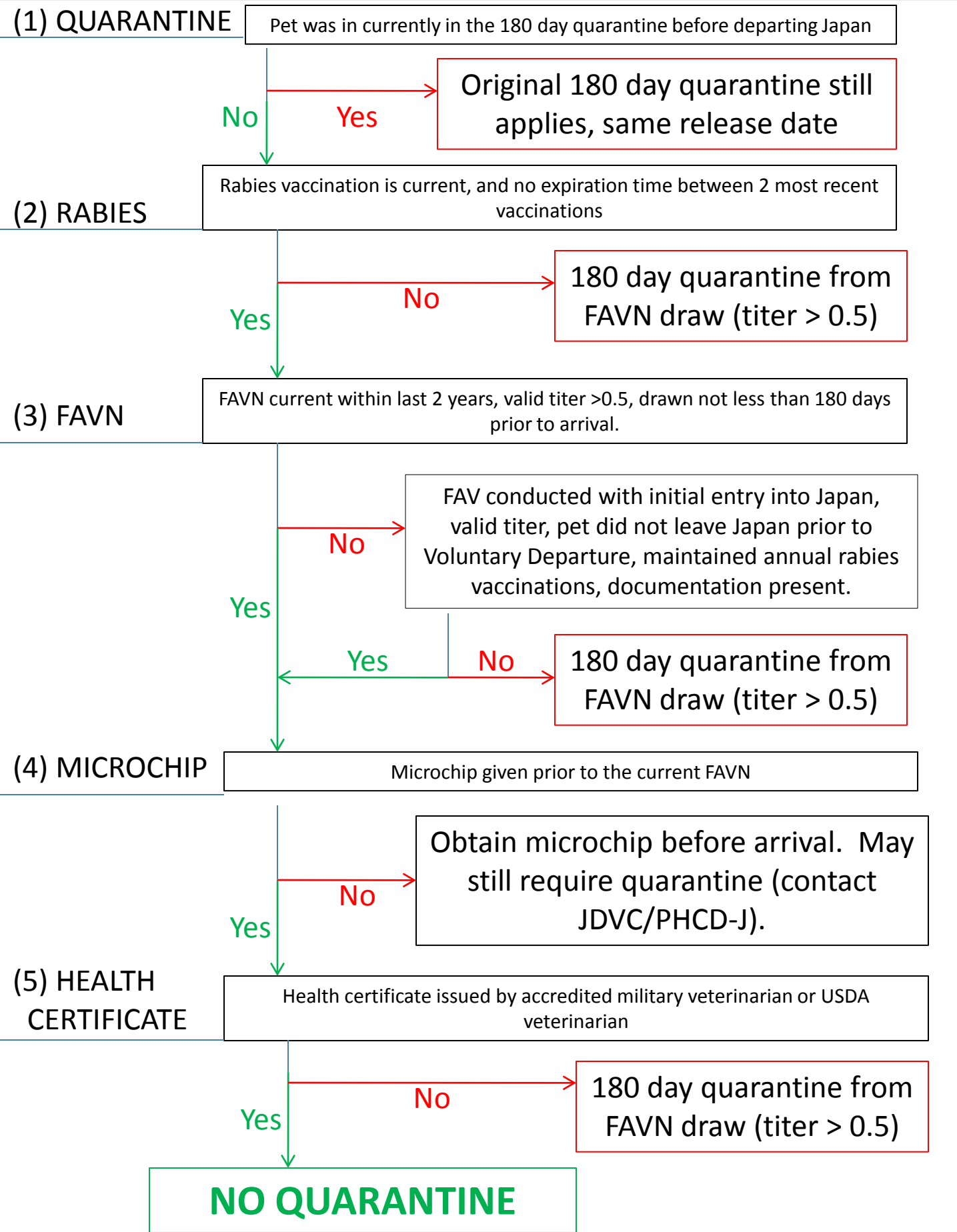
011-81-46-407-8464

DSN: 315-263-8464

Commercial Inside Japan: 046-407-8464

- Website:  
<http://www.usarj.army.mil/organization/vet/>
- Check out your Japan home station facebook page.
- Contact your local military veterinary clinic.

# Import Flowchart for Dogs and Cats Returning from Pacific Passage Phase I



The Flowchart only applies to pets returning from Pacific Passage Phase I. All others must abide by normal GOJ import requirements:

# Normal Government of Japan Import Requirements

1. Submit “NOTIFICATION OF IMPORT INSPECTION OF DOG” or “NOTIFICATION OF IMPORT OF ANIMALS UNDER THE RABIES PREVENTION LAW” 40 days prior to import.
2. Two current rabies vaccinations, without expiration of effective date between. Must have both rabies certificates on hand.
3. FAVN current within the last 2 years, titer > 0.5, and drawn not less than 180 days prior to arrival.
4. Microchip given prior to the current FAVN and before the last two rabies
5. Health certificate issued by either a military/GS or USDA veterinarian, that will not expire until after arrival in Japan. The military issued one must include clearly readable signature block with accreditation number. The USDA issued one must have embossed stamp.
6. Final clinical examination to confirm no current evidence of rabies (can be in conjunction with the health certificate) 1-4 days prior to arrival in Japan.
7. Contact the Government of Japan Animal Quarantine Service 1-4 days prior to arrival in Japan with complete itinerary and flight information.

Summary information is attached. Comprehensive information at <http://www.maff.go.jp/aqs/>.